

HiSpace CIRQ.



Elevate your workspace

An innovative solution for the modern workspace, *HiSpace CIRQ* allows you to change your working position at the touch of a button.

The electric height adjustable desk frame gives the option of sitting or standing, while powerful motors ensure long lasting performance. Offering a world of health benefits, *HiSpace CIRQ* promotes increased energy levels, relieves fatigue & boosts productivity with an on-trend round leg.



Pictured: HiSpace CIRQ Single Desk in White





Innovative design

With its innovative sit-to-stand design, *HiSpace CIRQ* helps you to reach new heights of health and productivity.

With outstanding performance from powerful electric motors and a durable steel frame, the *HiSpace CIRQ* system will give you the ability to work healthier and smarter. The adjustable frame design allows for versatility in top size, making it suitable for any workspace.

Digital handset

Stay in control of your working height with a responsive 3 position memory handset, featuring digital display.

Preset your ideal heights and change up your working position at the touch of a button. *HiSpace CIRQ* puts you in control, with all the functions you need at your fingertips.

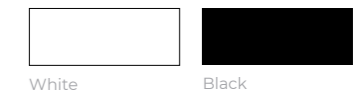
10 year warranty

All *HiSpace CIRQ* frames are backed by a 10-year commercial warranty (5 year motor), with the strength and durability of a solid steel frame.

Specifications



POWDER COAT COLOURS



HISPACE C1RQ

SINGLE DESK



Description	W (mm)	H (mm)
Single desk frame	1100 - 1800	600 - 1250

Option: Custom melamine top - 25mm

Specifications

- C-leg design
- 2 motor
- 3 stage
- 3 position memory
- Anti-collision
- Height range: 600 - 1250mm
- Width range: 1100 - 1800mm
- Max lifting capacity: 120KG
- Lift speed: 35mm / per second
- Noise < 48dB

90° / 120° DESK



Description	W (mm)	H (mm)
90 / 120 desk frame	1350 - 1750	600 - 1250

Option: Custom melamine top - 25mm

Specifications

- C-leg design
- 3 motor
- 3 stage
- 3 position memory
- Anti-collision
- Height range: 600 - 1250mm
- Width range: 1350 - 1750mm
- Max lifting capacity: 150KG
- Lift speed: 35mm / per second
- Noise < 48dB

B2B WORKSTATION



Description	W (mm)	H (mm)
B2B Workstation	1100 - 1800	600 - 1250

Option: Custom melamine top - 25mm
Cable tray

Specifications

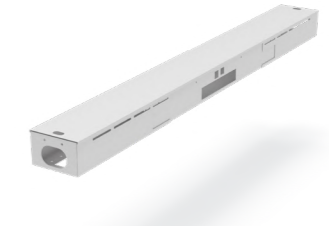
- H-leg design
- 4 motor
- 3 stage
- 3 position memory
- Anti-collision
- Height range: 600 - 1250mm
- Width range: 1350 - 1750mm
- Max. lifting capacity: 120KG (per side)
- Lift speed: 35mm / per second
- Screen brackets
- Anti-collision
- Noise < 48dB



PET Screens
(See below)



Modesty Panel

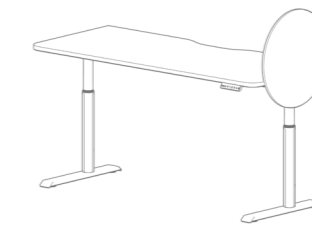


Cable Tray
*B2B only

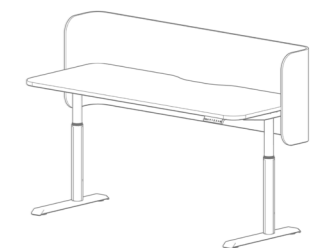
TYPICAL SCREEN CONFIGURATIONS



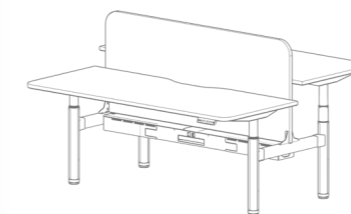
Hanging screen



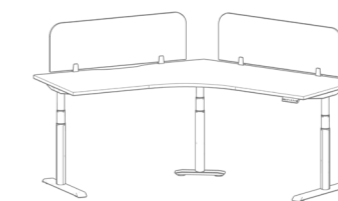
Round screen



Wrap screen



Shared screen



Deskmount screen

Option: 12mm / 24mm PET
T-Clamp, C-Clamp or concealed brackets





Pictured: HiSpace CIRQ Back-to-back Workstation in Black



NSW ☎ (02) 9374 0085

QLD ☎ (07) 3205 1622

info@pcfaustralia.com.au

www.pcfaustralia.com.au



@pcfaustralia